

A stylized graphic in shades of gray depicts a person with arms raised, reaching towards a large red star in the upper left. The background features a large circle with radiating lines and a stylized mountain range at the bottom. To the right of the person is a red graphic of horizontal lines, resembling a flag or a stylized 'H'.

**New York Society  
for Health Planning**

**Leadership  
Award**

*Wednesday*

*November 4, 2009*

*5:30 - 8:00 pm*



**New York Society for Health Planning**

**NYSHP Leadership Award**

*Wednesday, November 4, 2009*

*presented to*

**Thomas M. Jung, R.A.**

*Assistant Director*

Division of Health Facility Planning  
New York State Department of Health

*and to*

**Elaine Keane, M.P.H.**

*Vice President, Business Development*  
Visiting Nurse Service of New York

*for their outstanding leadership in the field of Health Planning*

*Sal Anthony's Restaurant S.P.Q.R.*  
133 Mulberry Street, New York, NY 10013

---

---

**THOMAS M. JUNG, R.A.**

*New York State Department of Health*  
Troy, New York



Thomas M. Jung serves as Assistant Director of the Division of Health Facility Planning, and directs the planning, architectural design and construction components of New York State's Certificate of Need Program, overseeing the review and approval of over \$2 billion dollars of health care capital work annually.

Jung is a steering committee member of the AIA/HHS Health Care Guidelines Revision Group, participating in revision cycles for the 1996-97, 2001, 2006 and 2010 editions of the "Guidelines for Design and Construction of Health Care Facilities". He is also a Facilities Guidelines Institute board member, responsible for administrative oversight and research activities of the Guidelines on a regular cycle. Jung also chairs the Construction Standards Advisory Group (CSAG), an ad hoc group of over 80 volunteers from the design, construction, and administrative fields of the New York State healthcare industry, which reviews and updates State healthcare construction regulations.

In 1998, Jung received a President's Citation from AIA New York State, in recognition of his leadership and the work accomplished by the CSAG.

Jung wrote the chapter "Health Care Security" for "Building Security: Handbook for Architectural Planning and Design," (by Barbara Nadel, McGraw-Hill, 2004), which won an AIA Institute Honors for Collaborative Achievement Award in 2005.

In 2006, Columbia University's Mailman School of Public Health honored Jung for 20 years of professional contribution to the health care system of New York State.

In December 2008, Healthcare Design Magazine featured Jung in an article entitled "Twenty Who Are Making A Difference", highlighting health care professionals in the United States who have been nominated by their peers as having made a significant difference in advancing the design of health care facilities.

Jung received his Bachelor of Arts in Environmental Design and Planning and Masters of Architecture degrees from the State University of New York at Buffalo.

---



**ELAINE KEANE, M.P.H.**

*Vice President for Business Development*  
Visiting Nurse Service of New York

Elaine Keane has served as the Vice President for Business Development at the Visiting Nurse Service of New York since 1995. In this role, Elaine is responsible for projecting the business base for the agency and in meeting growth targets. She manages the agency's relationship with hospitals, physicians, and nursing facilities. She oversees more than 250 staff, including Business Development professionals, Home Care Consultants, and the Referral Services Department. She oversees the extensive intake program for VNSNY process over 100,000 cases a year centrally and in an extensive on-site intake program at 57 hospitals and numerous nursing facilities in NYC.

Prior to coming to VNSNY, Elaine was Director of Planning for The New York Hospital, responsible for program development and strategic planning. She worked for New York Hospital/Cornell for 10 years, in 3 different positions. During her tenure at NYH, she oversaw the CON approval process and worked on securing the approval for the new hospital building over the FDR Drive. For 5 years, she was a management consultant for Booz Allen and Hamilton, consulting to hospitals and Medical Centers. She also lived abroad for 2 years, working with a for-profit hospital chain that was setting up psychiatric hospitals in England. Elaine received her Bachelors of Arts from Douglass College, and her Masters from Columbia University School of Public Health.

---

# New York Hospital Queens Congratulates

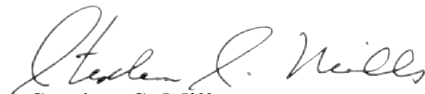
NEW YORK SOCIETY FOR HEALTH PLANNING

---

Honoring  
NYSHP Leadership Award Recipients

Thomas M. Jung, R.A.  
Assistant Director, Division of Health Facility Planning  
New York State Department of Health  
and  
Elaine Keane, MPH  
Vice President, Business Development  
Visiting Nurse Service of New York

---



Stephen S. Mills  
*President and Chief Executive Officer*



George F. Heinrich, M.D.  
*Chairman, Board of Trustees*

56-45 Main Street  
Flushing, NY 11355  
718-670-2000

[nyhq.org](http://nyhq.org)

© 2008 New York Hospital Queens



*Expertise you trust.  
Service you deserve.*

New  
York  
Hospital  
Queens

Member  
NewYork-Presbyterian Healthcare System  
Affiliate, Weill Medical College of Cornell University

Memorial Sloan-Kettering  
Mortimer B. Zuckerman  
For Cancer Research Facility  
New York, NY

**Turner Construction Company**

is proud to support the

**New York Society for Health Planning**

*Congratulations to*

**Thomas M. Jung, R.A.**

**New York State Department of Health**

**&**

**Elaine Keane, MPH**

**Visiting Nurse Service of New York**

Turner Construction Company is the nation's leading builder. We have earned this position through the successful completion of large and complex projects, as well as highly finished tenant build-outs, in both new and existing structures over the past 107 years. We take great pride in the trust our clients place in selecting us as a partner to work diligently and creatively in finding the best possible solution for every project.



**Turner**

[www.turnerconstruction.com](http://www.turnerconstruction.com)

---

# ***NewYork-Presbyterian***

*Congratulates*

***Thomas M. Jung, R.A***

and

***Elaine Keane, MPH***

*as the 2009  
New York Society  
for Health Planning  
Leadership Award Honorees*

---

---

## **Office of Regulatory Planning & Policy Development**

Wayne M. Osten, Senior *Vice President and Director*

Kimlee Roldan-Sanchez, *Director*

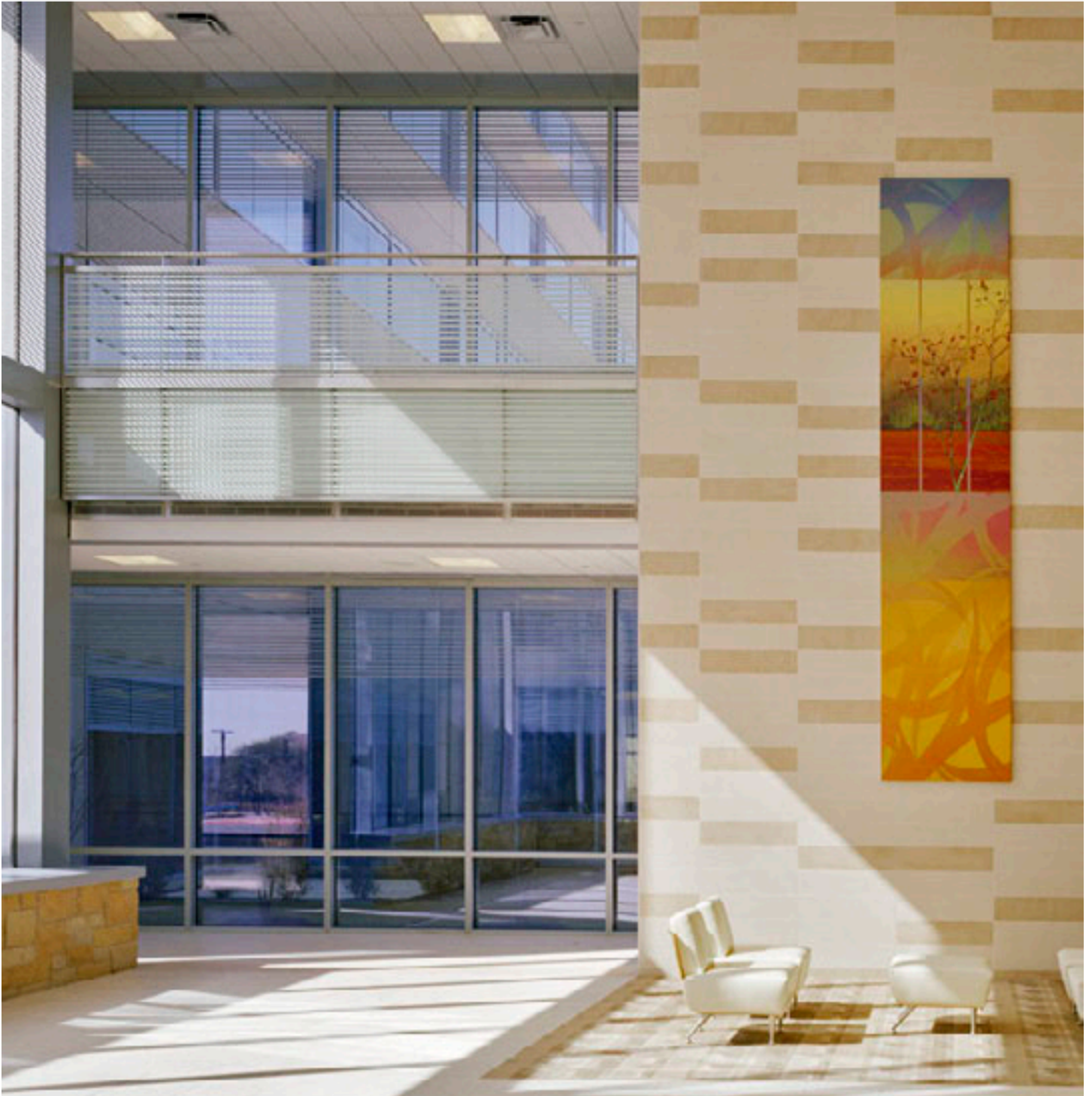
Angela Gonzalez, *Manager*

Lamisha T. Smith, *Planning Associate*

WE CREATE  
WE INSPIRE  
WE CONNECT  
WE CARE



[www.hok.com](http://www.hok.com)



# VISITING NURSE SERVICE OF NEW YORK



CONGRATULATES  
The New York Society  
for Health Planning,  
Thomas M. Jung, RA,  
and sends a very special  
congratulations  
to our VP of Business  
Development,  
our very own Elaine Keane.

1-888-VNS-1-CALL | [www.vnsny.org](http://www.vnsny.org)





SUNY  
**DOWNSTATE**  
Medical Center

SUNY Downstate Medical Center is proud to support

# **The New York Society for Health Planning**

and congratulates  
the 2009 Leadership Award Honorees

**Thomas M. Jung, R.A.**

Assistant Director Division of Health Facility Planning  
New York State Department of Health

and

**Elaine Keane, MPH**

Vice President, Business Development  
Visiting Nurse Service of New York

**John C. LaRosa, MD, FACP**

President

**Debra D. Carey**

Chief Executive Officer

Congratulations to

*Thomas M. Jung, R.A.*

*Assistant Director*

*Division of Health Facility Planning*

*New York State Department of Health*

and

*Elaine Keane, MPH*

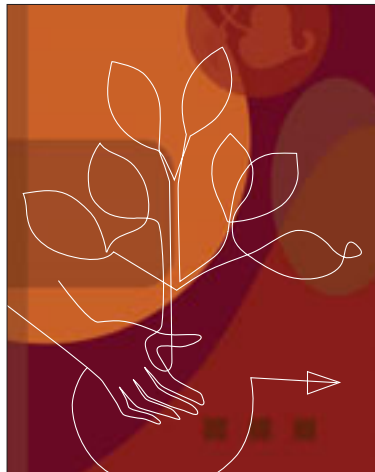
*Vice President, Business Development*

*Visiting Nurse Service of New York*

Their strategic vision, integrity and unrelenting commitment to quality has raised the bar throughout the health care industry.



HEALTH CARE



NOT-FOR-PROFIT



SPECIAL NEEDS

New York, New York  
[www.loebandtroper.com](http://www.loebandtroper.com)

Audit: 212-867-4000  
Consulting: 212-697-3000

**CONGRATULATIONS TO**

**THOMAS M. JUNG, R.A.**

Assistant Director  
Division of Health Facility Planning,  
New York State Department of Health



**THE NEW YORK SOCIETY FOR  
HEALTH PLANNING**

has chosen a true leader in the industry  
to honor for its Leadership Award

We salute him  
for his untiring devotion to our field,  
his achievements in improving the delivery of health care  
and for his inspirational leadership.

With deep appreciation from

**Jeffrey Kraut**

**Jerrold Hirsch**

**&**

**The Office of Strategic Planning  
North Shore-LIJ Health System**



**CONGRATULATIONS TO**

**ELAINE KEANE, MPH**

Vice President, Business Development,  
Visiting Nurse Service of New York (VNSNY)



**THE NEW YORK SOCIETY FOR  
HEALTH PLANNING**

has chosen a true leader in the industry  
to honor for its Leadership Award

We salute her  
for her untiring devotion to our field,  
her achievements in improving the delivery of health care  
and for her inspirational leadership.

With deep appreciation from

**Jeffrey Kraut**

**Jerrold Hirsch**

**&**

**The Office of Strategic Planning  
North Shore-LIJ Health System**



Skidmore, Owings & Merrill LLP congratulates

**Thomas M. Jung  
and Elaine Keane**

2009 Leadership Award Recipients



**DGA**PARTNERS

MANAGEMENT CONSULTANTS TO THE HEALTHCARE INDUSTRY

**PLANNING SERVICES**

**PHYSICIAN HOSPITAL ALIGNMENT**

**BI OPERATIONS**

**VALUATION SERVICES**

**DGA PARTNERS**

Congratulates

**ELAINE KEANE, MPH**

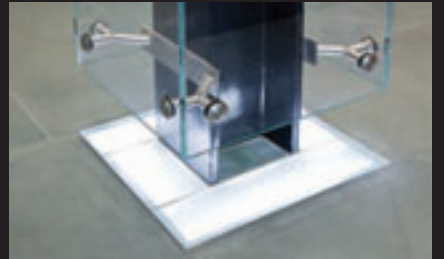
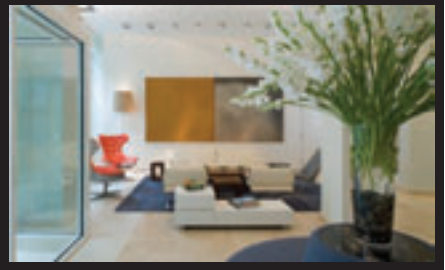
As one of the 2009 Leadership Award Honorees

Philadelphia

New York

Washington, DC

[www.dgapartners.com](http://www.dgapartners.com)  
800-241-5268



**Health/Sciences Studio**

Henry Meltzer, AIA  
Jonathan Moss, AIA  
Steven Oakley, AIA  
Norman Rosenfeld, FAIA, FACHA

**STONEHILL & TAYLOR**  
ARCHITECTS AND PLANNERS

Landow and  
Landow  
Architects AIA



architecture

interior design

facilities planning

CONGRATULATIONS TO

Tom Jung, RA

and

Elaine Keane, MPH

3000 marcus avenue  
lake success, new york 11042  
p. 516.326.1111 f. 516.326.1244  
mail@landow-architects.com  
www.landow-architects.com



# The New York Society for Health Planning

***Board of Directors***

congratulate

**Thomas M. Jung, R.A.**

*and*

**Elaine Keane, M.P.H.**

on honors well deserved!

*President, NYSHP*  
**Ralph Herz, Jr. M.D.**  
American Group Practice

*Vice President, NYSHP*  
**Patricia J. Francis**  
Consultant

*Directors*

**Alvin Dunaisky, AIA, AICP**  
SUNY Downstate Medical Center

**Julie P. Liu**  
North Shore-Long Island Jewish Health System

**Wendy J. Hall**  
HLW International LLP

**Robert F. Porr**  
Thomson Reuters

**Nancy Victor, MSH, MPA**  
SUNY Downstate Medical Center

*Executive Director, NYSHP*  
**Debra Goldman. MBA**

---